

River Valley Presents Genetic Designs V



**5:30 PM • FRIDAY
SEPTEMBER 18TH, 2009
AT THE FARM, NEWBURGH, ON**

Welcome to the fifth River Valley Seed Stock Sale!



Dear friends and fellow Hereford Breeders,

Well, for two years now in Eastern Ontario, we have been blessed with an abundance of rain and cool weather. It feels more like early June than mid August.

While this makes for lots of grass, it has been challenging getting the crops in, the hay off and the corn to grow. Lots of cool weather and rain have brought challenges to Ontario farmers, while our friends in the Western provinces have had challenges with hot, dry weather and drought. It is hard to believe that in one year, things could be so different between two parts of the country. However, it wouldn't be farming if there weren't changes and challenges! That's what makes every day different and worth getting up for.

Here at River Valley, we are making some changes too. This year our sale time has changed to 5:30 pm. We hope that this will allow some of the folks who work off the farm or have to travel a chance to leave home a little later. The cattle will be on display all day, so come early, look them

over and have lunch prior to the sale. After the sale please join us for refreshments and a chance to socialize with fellow breeders.

Please stop by the sales ring and register when you arrive. We will be making a series of draws for both juniors and adults, for sale credits and other items, for those who arrive early. Check out the details at the back of the catalogue. Juniors should also check out our incentive program on page 28.

Donald, Phil and the rest of the crew have been busy looking after the herd.

The cattle we are offering this year have been selected by a rigorous panel of judges (we can't name them all here, but everyone has a lot of opinions before we make the final selection!) Check out this year's centerfold, a special girl who will keep getting better.

Our bull battery continues to make a powerful impact on the herd. Don't miss the opportunity to take home genetics from Radar, Palladin, Battle Cry, Dandy, Freedom and of course Can-Am, the 2009 Denver Junior Bull Calf Champion who sold in this sale last year.

Our Genetic Affiliates once again have great cattle on offer. We are pleased to have Star Lake Cattle Ranch, Mar-Jon Polled Herefords, Rolling Acres Farm, Brillinger Farm and Caylynne Brown joining with us this year. Don't miss the opportunity to check out the genetics from these fellow breeders.

Last but not least, we would be remiss if we didn't thank Phil Brown for his dedication to the farm and for keeping the "design" moving forward.

Please join us on Friday, September 18 as we kick off the Hereford weekend in Ontario with a time of fun and Hereford enthusiasm.

If we can be of any assistance to you prior to the sale, please give Kelly a call at the office. She can be reached at 613-378-2701. She would be please to assist you with any questions or information you may need.

We look forward to seeing you at the farm!

Sincerely,

Elwyn, Donald and Pauline



Dear Friends and Hereford enthusiasts,

Welcome to Genetic Designs V.

The cattle offered in this year's sale are cattle that are bred to be productive, fertile, sound seed-stock that should prove to be problem-free for many years for their new owners.

The heifer calves are exciting! Future brood cows and top-end show heifers that can compete at the national level for both juniors and seniors alike. The cows selling, from donor-type females to good replacement cows, are very functional.

Volatility in the stock markets doesn't preclude investment in good Hereford stock.

With cow inventories near or at record lows, those with the foresight to re-stock their herds with quality Hereford cattle shall reap the rewards.

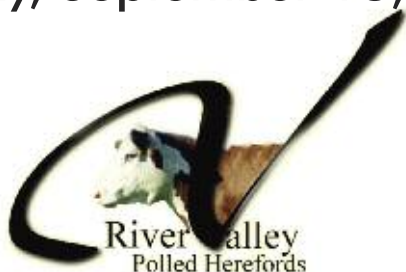
Finally, I would be remiss not to thank the Emburys for allowing me the opportunity to work with them to genetically design the best possible Herefords that we can.

Sincerely,

Phil Brown, CATALYST

Genetic Designs V Sale

Friday, September 18, 2009 • Newburgh, ON • 5:30 pm



River Valley Polled Herefords

Elwyn, Donald & Pauline Embury

240 Embury Rd, RR 1

Newburgh, ON K0K 2S0

Cattle Office: (613) 378-2701 Main Office: (613) 378-6632

Fax: (613) 378-1646 Res: (613) 378-2224

Web site: www.rivervalleyherefords.com

rivervalleyherefords@kos.net

Directions

From the West, take Hwy 401 to Napanee
Exit on Hwy 41 north (Exit 579)
Turn right on Goodyear Road
Goodyear Road runs into County Road 11
Go straight on County Road 11 to Embury Road
River Valley is located at 398 Embury Road

From Toronto Airport, follow 401 East to Exit 579
1^{1/2} to 2 hours Driving Time

From Syracuse, NY Airport, North on Interstate
81 to the Canadian Border take Highway 401 West

From the East, take Hwy 401 to Camden East
Take exit 593 north to the village of Camden East
Turn left at 4-way stop in Camden East
Turn right at 3-way stop in Newburgh
Turn left at Academy Street
Turn right at Embury Road
River Valley is located at 398 Embury Road

Accommodations

River Valley has reserved a block of rooms at a special rate at the following hotels:

Hampton Inn

40 McPherson Drive, Napanee

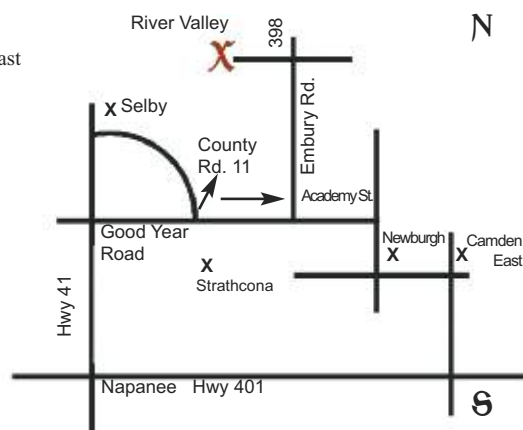
\$109.00 per night includes hot & cold breakfast

Comfort Inn Belleville

200 North Park Street, Belleville

\$95.00 per night

Hotels in Kingston, Napanee and Belleville are hard to find due to Homecoming weekend at Queens University. **Please contact Pauline or Kelly at (613) 378-2701 for help with room reservations.**



Payment:

Terms of the sale are cash, cheque, visa or mastercard. All cattle are to be paid for before they are released. All other arrangements must be agreed to with the owner or manager prior to the sale. All transactions are in Canadian dollars.

Rules of the Sale:

Each animal will be sold to the highest bidder. The auctioneer shall settle any disputes and that will be the final authority. Any announcement from the auctioneer's stand will take priority over printed material in this catalogue or any information on the supplement sheets furnished on sale day. All animals in this sale become the immediate property of the buyer once they are sold. All buyers are expected to recognize this fact of their ownership and either accept full responsibility or else insure their animals before leaving the sale.

Cataloguing Cow/Calf Pairs:

We have printed the pedigree of the calf. The A Lot number will be the calf's tag number. The birth date and tattoo of the cow is listed underneath the pedigree. The bottom half of the calf's pedigree will be the cow's own pedigree.

Health:

All animals in the sale have met all necessary health requirements.

Delivery:

Will be provided at cost at the buyers option and risk. Instructions for delivery must be given at time of settlement. No cattle will be released until after the conclusion of the sale.

Breeding Guarantee:

All cattle in this sale are guaranteed in accordance with the rules and regulations of the Canadian Hereford Association. Any female which is

stated to be pregnancy checked safe in calf is guaranteed to be pregnant at the time of this sale. All females safe in calf or with a calf at side are thereby considered breeders with no further guarantee. All females who have been serviced but not checked safe in calf, carry no guarantee on this breeding. The owners can guarantee a service to this same breeding at a later date after the sale providing it involves one of their active herd sires that is eligible for semen sales. Females cannot be guaranteed if they are subjected to estrus-synchronization or super-ovulation treatment. Please listen carefully to special guarantees from the auction block during the sale. The owners understand that when something goes wrong both the buyer and the seller have losses. We will make every attempt within reason to stand behind our cattle.

Liability:

All persons attending this sale and related functions do so at their own risk. The sellers and sale management assume no liability, legal or otherwise, for any accidents that may occur. Accidents at cattle sales are very rare, but all persons attending this sale must understand that they do so at their own risk. In the event that unforeseen circumstances cause the cancellation of this sale for any reason, the sellers and sale management will not be liable for expenses incurred by anyone planning to attend the sale. The sellers and sale management also reserve the right to withdraw any animal catalogued from the sale for any reason without recourse.

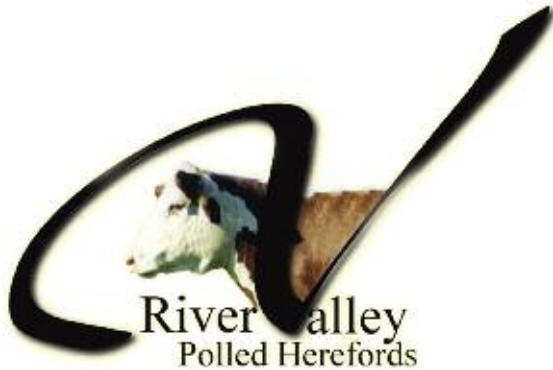
EPDs:

EPDs are updated regularly by the CHA so we cannot guarantee that the EPDs listed in this catalogue will be the same as those assigned to the cattle by sale day. Visit the CHA website to attain the most current data. River Valley and their consignors cannot be responsible if the cattle do not perform as indicated by these numbers

Go Online to check
out our new look!
www.rivervalleyherefords.com

Genetic Designs V Sale

Friday, September 18, 2009 • Newburgh, ON • 5:30 pm



River Valley Polled Herefords

Elwyn, Donald & Pauline Embury
240 Embury Rd, RR 1
Newburgh, ON K0K 2S0
Cattle Office: (613) 378-2701
Main Office: (613) 378-6632
Fax: (613) 378-1646 Res: (613) 378-2224
Web site: www.rivervalleyherefords.com
rivervalleyherefords@kos.net

Acknowledgements:

Wallace Pugh - C.H.A.
President & Director
Garth Charlton
C.H.A. Director & Vice President
Gordon Stephenson
C.H.A. General Manager
Burt Grundy - C.H.A. Director
Robert Flack - O.H.A. President
Ron & Nadine Wells
O.H.A. Secretary-Manager
John Thurston - O.J.H.A President

Auctioneer:

Dale Stith - (918) 760-1550

Sale

Representatives:

Ted Serhienko, Consultant
T Bar C Cattle Co. Ltd.
(306) 221-2711

Phil Brown, Catalyst,
(613) 395-4664
(613) 848-8707

Craig Flewelling, Ringside
Flewelling Cattle Co.
(403) 556-0515

Tom Harrison Jr.
(613) 379-1006

Joe Rickabaugh
Hereford World
(785) 633-3188

Mina Serhienko, Clerk
T Bar C Cattle Co. Ltd.
(306) 933-4200

Service in French:

Catherine Brown
(613) 395-4664

Acknowledgements:

Dr. Ron Herron, Embryo
Transplant Services – Bay of
Quinte Vet Cattle Services

Dr. Calvin Lane
Herd Health – Lane Vet Services
Thank you for all your help!



Check special
junior terms
on page 28

Genetic Affiliates

Star Lake Cattle Ranch

PO Box 40,
Skiatook, Okla. 74070
Jim & Randy Blin & Family, Owners
Montie Soules – Manager
Phone: 918-396-4322
Cell: 918-645-4322 – cell

Caylynne Brown

1900 Springbrook Road, RR 1
Springbrook, Ontario K0K 3C0
Phone: 613-395-4664
Cell: 613-848-8707

Brillinger Farm

Bruce & Gayle Brillinger
9675 Young Street, 2nd Floor
Richmond, Ontario L4C 1V7
Phone: 905-836-4439
Fax: 905-884-4727
Bus: 905-884-1511
president@mistertransmission.com

Mar-Jon Polled Herefords

John & Mary Petrik
RR 2, Moorefield, Ontario
N0G 2K0
Phone: 519-638-5610
519-638-5334

Rolling Acres Farm

Stephen & Paula Hamilton
C260 Heath Road,
Shawville, QC J0X 2Y0
Phone: 819-647-3540
Cell: 613-720-7540
Fax: 819-647-3541
Email: paula@rollingacres.biz
steve@rollingacres.biz

Sale Day Telephones

Pauline's Cell: 613-530-5726
Phil's Cell: 613-848-8707
Ted's Cell: 306-221-2711
Craig's Cell: 403-556-0515
River Valley Cattle Office:
613-378-2701

Cattle can be viewed on Thursday,
September 17.

Lunch served prior to sale.

View the catalogue online
at rivervalleyherefords.com

Please note new sale time



Fellow Hereford Enthusiasts,

It is a pleasure to welcome you to "Genetic Designs V." Having been involved with each sale it is gratifying to see the genetic and phenotypic improvements being made.

Cattle offered in this sale will excel in the show ring. Examples are the "Touch of Gold" heifer that sold in 2007 and was named the Canadian Reserve National Champion Female. The "Can-Am" bull calf that sold in 2008 was Junior Bull Calf Champion at the 2009 Denver National show. This sale offers prospects with similar genetics and quality.

This offering has multiple choices for the progressive breeder looking for females that will be efficient, productive brood cows with mainstream genetics and EPDs. These cattle are selected to breed early, milk well, have good udders and perform on grass.

Thanks to the Embury family for hosting this breed positive event. Please join us for the kick off event for this three day Hereford weekend. Come and enjoy the people, cattle and hospitality.

Respectfully,
Dale Stith, Auctioneer



Real-time bidding is available via the internet for this sale. Live audio and live video will allow buyers to bid on animals just as if they were present at the sale. Buyers must create an account prior to the sale. Please visit <http://www.LiveAuctions.tv> to create an account and request a buyer number.

Instructions are available at <http://www.LiveAuctions.tv> to walk you through the account setup process.
Web Address - <http://www.LiveAuctions.tv>
E-mail address - brad@LiveAuctions.tv
Questions? Call Christine (403) 850-6993
Buyers who would like to bid via the internet must register with LiveAuctions.tv two days prior to the sale.



KELLY ROGERS - CATTLE OFFICE



NATHAN HUFFMAN & LEO LARIVIERE - COW HERD MANAGERS

The Beautiful... Waltz



LOT 1 – RVP STAR 122L WALTZ ET 27W

1

RVP STAR 122L WALTZ ET 27W

FEMALE

RVP 27W

January 10, 2009

REMITALL ONLINE 122L
PC02789138

REMITALL EMBRACER 8E
REMITALL CATALINA 24H

STAR BETHANY 52M
PC02818922

CS BOOMER 29F
BNC 288G VICKI 203K

(PE) EPDs BW: 4.7 WW: 56.0 YW: 95.1 MM: 21.8 TM: 49.8
Birthweight: 78 lbs.

REMITALL ACME 10A
PLAIN LAKE BELLE 20X 117P 5B
MM RSM STOCKMASTER 512
REMITALL CATALINA 139C
REMITALL BOOMER 46B
CS MISS 1ST FLAG 21A
STAR MKS LIMELIGHT 288G
GH MISTY LYDA 940 8947

Here is an extra special show prospect sired by Online. She is long sided, feminine fronted, with the right kind of rib and muscle shape. Her dam, Bethany 52M is a high capacity, big volume, 29F daughter that is quickly becoming one of the true power cows in the industry. This is a big time show candidate and donor type female.

Owned with Star Lake Cattle Ranch.



STAR BETHANY 52M - DAM OF WALTZ

Phenomenal



LOT 2A – RVP 45S WHIMSICAL LADY 73W

2A **RVP 45S WHIMSICAL LADY 73W** FEMALE
February 14, 2009 **PC02926660**

STAR 2013 BATTLE CRY 45S PC02904113	HB STAR BATTLE GROUND 2013 STAR ONLINA DOMINETTE 507P ET	C-S PURE GOLD 98170 MSU MISS WRANGLER 61J REMITALL ONLINE 122L RB L1 DOMINETTE 4059 MW EUREKA 421E 1ET MOHICAN DEE M21E MOHICAN MINT 19M MOHICAN LADY 43F
--	---	--

MOHICAN LADY 31T
 PC02910243 MOHICAN LADY 57R

EPDs BW: 3.9 WW: 51.1 YW: 83.7 MM: 17.3 TM: 42.8
 Birthweight: 78 lbs.



LOT 2 - MOHICAN LADY 31T

2 **Cow Calved February 9, 2007, Tattoo: MW 31T**

EPDS BW: 4.7 WW: 57.2 YW: 88.4 MM: 16.9 TM: 45.5

Sells bred on April 14, 2009 to STAR RVPH Replay 327T ET. Examined safe in calf.

One of the top pairs in the sale offering. The cow, who is sired by Eureka, is moderate framed, deep ribbed and pretty uddered, with a brood cow look to her. She is raising a special heifer calf sired by Battle Cry. The heifer calf is big ribbed, thick topped and stout made, while still maintaining the look needed to be a very competitive show heifer.



LOT 3A – RVP 45S WHICH WAY TRIXIE

3A **RVP 45S WHICH WAY TRIXIE 3W** FEMALE
January 1, 2009 **PC02926459**

STAR 2013 BATTLE CRY 45S PC02904113	HB STAR BATTLE GROUND 2013 STAR ONLINA DOMINETTE 507P ET	C-S PURE GOLD 98170 MSU MISS WRANGLER 61J REMITALL ONLINE 122L RB L1 DOMINETTE 4059 WTK 75A CONTINENTAL 66F GL 127U KAREN 25Y BLAIR-ATHOL 122 CRACKER 8N MEADOW-ACRES 13K GEMINI 5M
--	---	--

GHC PREMIER 152M
 VELVETVUE 152M TRIXIE 2T
 PC02895909 MEADOW-ACRES 5M GEMINI 8N 11R

(PE) EPDs BW: 2.9 WW: 44.8 YW: 74.7 MM: 18.1 TM: 40.5
 Birthweight: 70 lbs.



LOT 3 - VELVETVUE 152M TRIXIE 2T

3 **Cow Calved February 10, 2007, Tattoo: VPH 2T**

EPDS BW: 2.7 WW: 44.8 YW: 70.4 MM: 18.5 TM: 40.9

Sells bred on March 23, 2009 to STAR RVPH Replay 327T ET. Examined safe in calf.

This is a moderate framed, excellent uddered, 152M daughter. Her Battle Cry heifer calf should develop into an excellent cow prospect.

Two-Year-Old Pairs

4A RVP 45S WELONIKA 57W FEMALE
RVP 57W February 1, 2009 **PC02926524**

HB STAR BATTLE GROUND 2013 MSU MISS WRANGLER 61J
 STAR 2013 BATTLE CRY 45S REMITALL ONLINE 122L
 PC02904113 STAR ONLINIA DOMINETTE 507P ET RB L1 DOMINETTE 4059

CS BOOMER 29F REMITALL BOOMER 46B
 RVP 29F TRUE LADY 5T CS MISS 1ST FLAG 21A
 PC02907507 PED 20X LADY 38K REMITALL KEYNOTE 20X
 GOLD-BAR LADY 183P 509D

EPDs BW: 3.6 WW: 45.4 YW: 79.3 MM: 17.2 TM: 39.8
 Birthweight: 77 lbs.



LOT4A – RVP 45S WELONIKA 57W



LOT 4 - RVP 29F TRUE LADY 5T

4 Cow Calved January 13, 2007, Tattoo: RVP 5T

EPDS BW: 4.0 WW: 45.8 YW: 79.5 MM: 16.6 TM: 39.5

Sells bred on April 2, 2009 to STAR 26P Freedom 45T ET. Examined safe in calf.

A Boomer 29F out of a Keynote! No guess work with this one! This is a very stylish, sound, young female. Her dam is still in the herd and raising a top heifer calf this year. She sells with a very fancy prospect by Battle Cry. The Battle Cry calves continue to impress!



LOT 5A – RVP 45S WHIRLWIND 37W

5A RVP 45S WHIRLWIND 37W FEMALE
RVP 37W January 18, 2009 **PC02928382**

HB STAR BATTLE GROUND 2013 MSU MISS WRANGLER 61J
 STAR 2013 BATTLE CRY 45S REMITALL ONLINE 122L
 PC02904113 STAR ONLINIA DOMINETTE 507P ET RB L1 DOMINETTE 4059

GHC NEVER LOOK BACK ET 30N WTK 75A CONTINENTAL 66F
 BARRONS BLOSSOM 30N 1T WALPOLE PHILIS 13F
 PC02895398 BARRONS BLOSSOM 2Z ET 1P HAROLDSON'S RAIDER P183 ET 2Z
 HAROLDSON'S BLOSSOM 81X 17B

(PE) EPDs BW: 5.3 WW: 49.5 YW: 84.1 MM: 16.4 TM: 41.2
 Birthweight: 70 lbs.



LOT 5 - BARRONS BLOSSOM 30N 1T

5 Cow Calved January 11, 2007, Tattoo: OBO 1T

EPDS BW: 7.4 WW: 54.1 YW: 89.2 MM: 15.1 TM: 42.2

Sells bred on April 11, 2009 to Haroldson's WLL Anchor 4T. Examined safe in calf.

This is a nice uddered angular daughter of Never Look Back (full brother to GHC STAR Moose 59M). Her Battle Cry heifer calf should develop into a very good cow and show prospect.

Power in these...



LOT 6A - RVP 20T RIVER VALLEY WENDY 50W

6A

RVP 20T RIVER VALLEY WENDY 50W FEMALE
PC02928295
 RVP 50W January 27, 2009
 TLELL 122L REBOOT 15R
 TLELL 15R TECHNO 20T
 PC02897654 CCR TLELL 29F BLU LISA ET 536R
 STAR AMERICA BNMHPH SS MKS 68M
 TLELL 68M TINKERBELL 19T
 PC02897675 SADDLE-VALLEY 46B WILLA 146J
 EPDs BW: 3.4 WW: 44.6 YW: 73.5 MM: 22.0 TM: 44.3
 Birthweight: 83 lbs.
 REMITALL ONLINE 122L
 HAROLDSON'S KALI 035J ET 58N
 CS BOOMER 29F
 THUNDER 23C LISA 18L
 RST ROF STAR LINEDRIVE
 STAR MKS WESTERN STAR 55
 REMITALL BOOMER 46B
 KLONDIKE JEAN 102B



LOT 6 - TLELL 68M TINKERBELL 19T

6 Cow Calved February 8, 2007, Tattoo: APSF 19T

EPDS BW: 5.8 WW: 45.0 YW: 74.4 MM: 20.1 TM: 42.6
 Sells bred on April 14, 2009 to Remitall Online 122L. Examined safe in calf.
 This is another special pair of cattle in the sale. 19T is a deep sided, long bodied, young female with an excellent udder. She will be a standout wherever she goes. The heifer calf, RVP 50W, is a show heifer prospect. She has a beautiful front end and very good rib shape to be competitive.



LOT 7A - RVP 45S TALISON'S WONDER 2W

7A

RVP 45S TALISON'S WONDER 2W FEMALE
PC02928288
 RVP 2W January 1, 2009
 HB STAR BATTLE GROUND 2013
 STAR 2013 BATTLE CRY 45S
 PC02904113 STAR ONLINIA DOMINETTE 507P ET
 GLENROSE 24M RAMBO 72R
 RVP 72R TALISON 86T
 PC02922304 MCCOY 58G ALISON 114P
 (PE) EPDs BW: 5.5 WW: 46.3 YW: 85.3 MM: 17.4 TM: 40.6
 C-S PURE GOLD 98170
 MSU MISS WRANGLER 61J
 REMITALL ONLINE 122L
 RB L1 DOMINETTE 4059
 DXB 3K HAWKEYE 24M
 LAMPOR'S 48G KODIVIC LADY 32J
 RU 20X GALAXY 58G
 MCCOY 3J ALISON 26L



LOT 7 - RVP 72R TALISON 86T

7 Cow Calved February 25, 2007, Tattoo: RVP 86T

EPDS BW: 7.8 WW: 47.7 YW: 91.5 MM: 17.1 TM: 41.0
 Sells bred on April 11, 2009 to Haroldson's WLL Anchor 4T. Examined safe in calf.
 This is a hard working maternal granddaughter of Galaxy 58G. Her dam sold to Tommy Mead in Georgia at last year's sale. The Battle Cry heifer calf she is raising is proof of this young female's capabilities.

Pairs

8A **RVP 36N WENONA 36W** FEMALE
RVP 36W **January 17, 2009** **PC02928292**

HF 4L BEYOND 36N PC02828255	FCC 60G MADDUX 4L MISS 87D FORTUNE 707B 67J	JSF 23 NIBBS 60G SVR 15D JADE 554G TEE-JAY 707B FORTUNE 4F MISS 77S VARSITY VIC 87D
GLENROSE 7J RENA 3R PC02878560	WTK 75A WELD 7J PLAIN LAKE 12E 5L NANA 3N	WTK 55Y BOND 75A AYWON 2B WILDA 10F PLAIN LAKE KEYN 126B EXTRA 12E PLAIN-LAKE 15D 2D LILY 5L

EPDs: BW: 5.4 WW: 49.3 YW: 75.2 MM: 19.0 TM: 43.6
 Birthweight: 67 lbs.



LOT 8A - RVP 36N WENONA 36W



LOT 8 - GLENROSE 7J RENA 3R

8 Cow Calved January 26, 2005, Tattoo: ARAI 3R

EPDS BW: 2.3 WW: 35.5 YW: 48.7 MM: 13.2 TM: 31.0
 Sells bred on April 19, 2009 to HF 4L Beyond 36N. Examined safe in calf.
 This is an easy fleshing, high volume cow in her prime production years. She is raising a very fancy heifer calf sired by the National Champion Bull, Beyond and is rebred the same way.

9A **RVP 842N WELL DONE 48W** FEMALE
RVP 48W **January 25, 2009** **PC02928294**

LAGRAND RELOAD 80P ET PC02892255	AA PRF WIDELoad TSF MS KEYNOTE 729	AA BOOMER 611 PRF MS SCARLETT 919 REMITALL KEYNOTE 20X BTF MS FORAGE 109W 9001
SQUARE-D LEXUS 842N PC02830671	SQUARE-D STINGER 779K SQUARE-D DANETTE 724K	RU DUSTER 60D SVR RUSHMORE'S BEAUTY 241E SQUARE-D JAG 530G SQUARE-D SYLVIE 641B

EPDs: BW: 5.1 WW: 49.3 YW: 83.0 MM: 19.6 TM: 44.3
 Birthweight: 93 lbs.



LOT 9A - RVP 842N WELL DONE 48W



LOT 9 - SQUARE-D LEXUS 842N

9 Cow Calved March 14, 2003, Tattoo: SAZ 842N

EPDS BW: 4.2 WW: 46.2 YW: 72.1 MM: 20.9 TM: 44.0
 Sells bred on March 29, 2009 to STAR 26P Freedom 45T ET. Examined safe in calf.
 A long sided, feminine, Stinger daughter that has extra capacity and a very good udder.



LOT 9A - RVP 45S MS WENDELIN 31W

10A **RVP 45S MS WENDELIN 31W** FEMALE
RVP 31W **January 14, 2009** **PC02926469**
 HB STAR BATTLE GROUND 2013 C-S PURE GOLD 98170
 STAR 2013 BATTLE CRY 45S MSU MISS WRANGLER 61J
 PC02904113 STAR ONLINIA DOMINETTE 507P ET REMITALL ONLINE 122L
 RB L1 DOMINETTE 4059
 NPH 20X SPARTAN 20N REMITALL KEYNOTE 20X
 WGF RACHAEL 50C
 NPH 20N MS JANE 7T NS LAKES KILO 002
 PC02909736 LAKE 002 MS JANE 317P JR P183 JANE X8
 EPDs BW: 3.8 WW: 46.0 YW: 78.3 MM: 17.5 TM: 40.4
 Birthweight: 69 lbs.

10 **Cow Calved February 13, 2007, Tattoo: 7T**

EPDS BW: 4.4 WW: 47.0 YW: 77.5 MM: 17.2 TM: 40.7

Sells bred on March 28, 2009 to STAR 26P Freedom 45T ET. Examined safe in calf.

Here's a very feminine, pretty uddered female sired by Spartan and out of a Kilo daughter. She is doing a tremendous job raising a very good Battle Cry heifer calf.



LOT 11A - RVP 45S SARA'S WORLD 63W

11A **RVP 45S SARA'S WORLD 63W** FEMALE
RVP 63W **February 4, 2009** **PC02926577**
 HB STAR BATTLE GROUND 2013 C-S PURE GOLD 98170
 STAR 2013 BATTLE CRY 45S MSU MISS WRANGLER 61J
 PC02904113 STAR ONLINIA DOMINETTE 507P ET REMITALL ONLINE 122L
 RB L1 DOMINETTE 4059
 HAROLDSON WLB MUTUMBO ET 72M STAR SS THUNDER LT 62J
 HAROLDSON'S SARAH 2Z 29D
 WLB 72M SARA 61T TA-BAR WLB FORMULA 035J
 PC02894580 WLB 035J FLORA 10P WLB 23C DOVE 1G
 EPDs BW: 4.5 WW: 46.4 YW: 83.4 MM: 14.6 TM: 37.8
 Birthweight: 70 lbs.

11 **Cow Calved March 15, 2007, Tattoo: WLB 61T**

EPDS BW: 5.9 WW: 47.9 YW: 87.7 MM: 11.5 TM: 35.5

Sells bred on April 6, 2009 to STAR 26P Freedom 45T ET. Examined safe in calf.

A very angular, Mutumbo daughter with a very good udder and extra rib shape. She sells with a very good cow prospect by Battle Cry that is ultra feminine and very eye-appealing.

Special Bull Calf Pairs

12A

RVP R125 WICHITA 16W

MALE

RVP 16W January 4, 2009 PC02928290

KCF BENNETT 3008 M326
SHF RADAR M326 R125
PC02909876 SHF POSTIVE MISS 73C M15

RRH MR FELT 3008
KCF MISS 459 F284
RF POSTIVE PLUS 73C
SHF INTERSTATE D03
CS BOOMER 29F
HAROLDSON'S CANDACE 122L 27N
STAR AMERICA BNMHPH SS MKS 68M
GHC MISS VINDICATOR 69M

STAR-LAKE DANDY 614R
RVP 614R TRADITION 36T
PC02898930 MHPH MS 68M GLORIA 1201R

EPDs BW: 4.0 WW: 55.0 YW: 86.9 MM: 20.4 TM: 47.9

Birthweight: 85 lbs.



LOT 12A – RVP R125 WICHITA 16W



2007 RAWF
RESERVE JUNIOR
HEIFER CALF CHAMPION



LOT 12 - RVP 614R TRADITION 36T

12 Cow Calved February 19, 2007, Tattoo: RVP 36T

EPDS BW: 3.2 WW: 50.2 YW: 86.2 MM: 22.3 TM: 47.4

Sells bred on April 8, 2009 to STAR Bright Future 533P ET. Examined safe in calf.

This is a daughter of Dandy that will impress. She is moderate framed, sound structured with an abundance of milk. She was Reserve Junior Heifer Calf Champion at the 2007 Eastern National at the Toronto Royal Winter Fair. The Dandy daughters coming into production this year are awesome young mothers. The dam of 36T sold in last year's sale to Haroldson's and Wooden Shoe Farms. Take a good look at the bull prospect this heifer is raising. He is definitely herd sire material.

13A

RVP 36N WARRIOR 59W

MALE

RVP 59W February 3, 2009 PC02928297

FCC 60G MADDUX 4L
HF 4L BEYOND 36N
PC02828255 MISS 87D FORTUNE 707B 67J

JSF 23 NIBBS 60G
SVR 15D JADE 554G
TEE-JAY 707B FORTUNE 4F
MISS 77S VARSITY VIC 87D

WILGOR 55K NORTHEASTERN OL 2N
SQUARE-D ELLIE 801S
PC02883643 SQUARE-D DANETTE ET 811M

REMITALL ONLINE 122L
WILGOR 174H KEYLINE 29F 55K
SQUARE-D JAG 530G
SADDLE-VALLEY ELEGANCE 165J

EPDs BW: 6.9 WW: 60.5 YW: 96.7 MM: 22.7 TM: 53.0

Birthweight: 95 lbs.



LOT 13A - RVP 36N WARRIOR 59W



LOT 13 - SQUARE-D ELLIE 801S

13 Cow Calved March 10, 2006, Tattoo: SAO 801S

EPDS BW: 5.4 WW: 57.9 YW: 91.7 MM: 20.7 TM: 49.7

Sells bred on April 18, 2009 to STAR 26P Freedom 45T ET. Examined safe in calf.

Here is a very eye-appealing Northeastern daughter. She is ultra feminine with a very good udder. She sells with a long sided, thick butted, stout, Beyond herd sire prospect.

Stylish Heifer...



LOT 14 -PRESTON 19H GENEVIEVE 3J 1R

14A **MISTERS 7P GENNY 318W** FEMALE
BRL 318W **March 18, 2009** **PC02928684**
 ELM-LODGE JURASSIC 13J REMITALL KEYNOTE 20X
 ELM-LODGE PETERBOROUGH 7P ELM-LODGE CLOUD NINE 42W
 PC02843028 JAMES COW 31B SAR WAT MAJOR 50Y
 GK BALLERINA X22620756 119P
 DR ACHIEVER 8403
 FHF 8403 STARBUCK 19H FHF RUTH 162A 18E
 PRESTON 19H GENEVIEVE 3J 1R JSF 37 271 DEVO 23C
 PC02863400 MISS 23C JESSICA 3J MISS 74U LINDA 27U 6F
 EPDs BW: 4.8 WW: 47.9 YW: 69.0 MM: 13.0 TM: 36.9
 Birthweight: 88 lbs.
 Owned by Brillinger farm

14 Cow Calved April 4, 2005, Tattoo: NHP 1R

EPDS BW: 3.4 WW: 41.3 YW: 57.4 MM: 21.4 TM: 42.0

Sells bred on May 11, 2009 to STAR Bright Future 533P ET. Pasture exposed to Elmlodge Peterborough 7P from June 4 to July 21, 2009. Examined safe to AI service.

Starbuck daughters are leaving their mark on the industry as highly productive brood cows. This cow is a very attractive, easy fleshing and deep ribbed female. Her heifer calf by past Royal Winter Fair Champion Bull, Peterborough, displays many of her dam's attributes.

Owned by Brillinger Farm



LOT 15A - MARJON 161L WINK 102W

15A **MARJON 161L WINK 102W** FEMALE
PM 102W **January 2, 2009** **PC02928367**
 FELTONS JUMBO 112 FELTONS SOUNDER 912
 DOUBLE-U LTD EDITION ET 161L FELTONS DOMINETTE G44
 PC02788503 DOUBLE-U MISS ANCHOR 1C 26E DOUBLE-U ANCHOR 1C
 DOUBLE-U MISS CELEBRITY 20C
 STAR BESTMAN 28M ET STAR SS THUNDER LT 62J
 MARJON 28M ROSIE 215R JR K58 QUEEN D12
 PC02872408 MARJON 14G MISS JEALOUS 212K CIRCLE-D 32D CAPONE 14G
 WTK 49C JADE 56F
 EPDs BW: 2.9 WW: 43.0 YW: 72.4 MM: 20.2 TM: 41.7
 Birthweight: 90 lbs.

We think this is the kind of heifer that will be the future of the Hereford breed. Like her mom, this correct heifer is equipped to calve easily and raise one you can be proud of. Style supported by power built on milk.

Owned by Mar-Jon Polled Herefords

15 Cow Calved February 15, 2005, Tattoo: PM 215R

EPDS BW: 2.5 WW: 34.8 YW: 56.8 MM: 16.7 TM: 34.1

Sells bred to STAR Got It Here 139T from March 21 to August 10, 2009.

Style, milk and power describe Rosie 215R. The maternal pedigree of this female reads like a who's who of the Hereford breed. This one won't keep you up at night when calving. Proof of her ability is standing at her side in MARJON 161L Wink 102W.

Owned by Mar-Jon Polled Herefords

Calf Pairs

16A

RVP 45S WINTER ROSE 79W

FEMALE

RVP 79W February 19, 2009 PC02926690

HB STAR BATTLE GROUND 2013 C-S PURE GOLD 98170
 STAR 2013 BATTLE CRY 45S MSU MISS WRANGLER 61J
 PC02904113 STAR ONLINIA DOMINETTE 507P ET RB L1 DOMINETTE 4059
 HAROLDSON'S RAIDER P183 ET 2Z
 GOLD-N 21OR RAIDER EDGE ET 24E K9 229J APRIL 21OR
 HINTERLAND ROSEBUD 27T HINTERLAND BIG JOHN 13L
 PC02893485 HINTERLAND DAISY DUKE 32N SQUARE-D NATALIE 780L
 EPDs BW: 4.1 WW: 48.4 YW: 82.0 MM: 17.0 TM: 41.2
 Birthweight: 81 lbs.



LOT 16 – HINTERLAND ROSEBUD 27T

16

Cow Calved January 8, 2007, Tattoo: EHD 27T

EPDS BW: 5.0 WW: 51.8 YW: 85.0 MM: 16.3 TM: 42.2

Sells bred on April 6, 2009 to STAR RVPH Replay 327T ET. Examined safe in calf.

This is a deep ribbed, stout, Raider granddaughter that should make a significant contribution to any herd. She sells with a very complete and attractive Battle Cry heifer calf at side.

17A

RVP 45S WEEKEND FASHION 66W

FEMALE

RVP 66W February 2, 2009 PC02926604

HB STAR BATTLE GROUND 2013 C-S PURE GOLD 98170
 STAR 2013 BATTLE CRY 45S MSU MISS WRANGLER 61J
 PC02904113 STAR ONLINIA DOMINETTE 507P ET RB L1 DOMINETTE 4059
 FELTONS ENDURANCE 745
 MOHICAN MINT 19M MOHICAN LISA M24E
 MOHICAN FASHION 74T MOHICAN TRM JAVA 25 J
 PC02910244 MOHICAN FASHION 105P MOHICAN FASHION 143J
 EPDs BW: 4.0 WW: 47.2 YW: 80.0 MM: 17.2 TM: 40.8
 Birthweight: 58 lbs.



LOT 17 – MOHICAN FASHION 74T

17

Cow Calved March 1, 2007, Tattoo: MW 74T

EPDS BW: 4.8 WW: 49.5 YW: 81.0 MM: 16.6 TM: 41.4

Sells bred on May 4, 2009 to STAR 26P Freedom 45T ET. Examined safe in calf.

Here is a young two year old that has a different pedigree than most. She is raising another really nice heifer calf by Battle Cry that is moderate framed with a little extra shape.

18A

RVP 115N WINTER LADY 30W

FEMALE

RVP 30W January 14, 2009 PC02926467

HAROLDSON'S PRINGLE 20X 12G REMITALL KEYNOTE 20X
 STAR 12G PALLIADIN 115N THE-CLIFFS P183 JOY 5C
 PC02847633 GHC MISS CARLA 35J WTK 75A CONTINENTAL 66F
 GL 127U KAREN 25Y
 FELTONS JUMBO 112
 DOUBLE-U LONGITUDE ET 151L DOUBLE-U MISS ANCHOR 1C 26E
 PED 151L SUMMER LADY 31S MSU OPTIMUM Z03
 PC02889079 PED Z03 LADY LIKE 29L PED 97A LADY ANXIETY 23D
 EPDs BW: 5.4 WW: 53.6 YW: 80.4 MM: 16.8 TM: 43.6
 Birthweight: 83 lbs.

18

Cow Calved January 31, 2006, Tattoo: RVP 31S

EPDS BW: 3.8 WW: 46.9 YW: 67.3 MM: 18.4 TM: 41.8

Sells bred on April 1, 2009 to STAR RVPH Replay 327T ET. Examined safe in calf.

This is a high volume, low maintenance daughter of Longitude just entering her prime. Her Palliadin heifer calf won't disappoint.



LOT 19 - SRL SUMPTION SPECIAL 3S

19A

RVP 45T SUMPTION WONDERFUL 24W

FEMALE

RVP 24W

January 7, 2009

PC02926468

STAR TRF INDEPENDENCE 26P ET
STAR 26P FREEDOM 45T ET
PC02910241 STAR RICKI 162M

RU 20X GALAXY 58G

SRL SUMPTION SPECIAL 3S
PC02891967 SRL FAITHFUL MARIE 301M

STAR AMERICA BNMHPH SS MKS 68M
STAR TRF MALLORY 47J
H 8E EMBRACER 8006
STAR ROCKIN ERICA 38F
REMITALL KEYNOTE 20X
RU 10A ELM 57E
SRL FAITHFUL SAFARI 4G
MIL-WRAY MARIE 3J

EPDs BW: 4.0 WW: 45.1 YW: 77.4 MM: 21.3 TM: 43.8

Birthweight: 78 lbs.

19

Cow Calved February 5, 2006, Tattoo: SRL 3S

EPDS BW: 3.9 WW: 41.5 YW: 76.0 MM: 24.3 TM: 45.0

Sells bred on April 18, 2009 to STAR 26P Freedom 45T ET. Examined safe in calf.

This Galaxy daughter is a long sided, good uddered young cow with a very good set of numbers. The Freedom heifer calf she is raising has a little extra shape and bone in a very attractive package.



LOT 20A - RVP 106S WISPER 54W

20A

RVP 106S WISPER 54W

FEMALE

RVP 54W

January 29, 2009

PC02928296

REMITALL ONLINE 122L
PED 122L STONE ET 106S
PC02889736 JWH 60D DUSTY LADY 22M

NJW Z17 VAQUERO 25C

LCPH 25C MISS VIRGINIA 12S
PC02877242 JSF 14 VIRGINIA 31P

REMITALL EMBRACER 8E
REMITALL CATALINA 24H
RU DUSTER 60D
JWH 45A MISS FORTUNE 707B 53J
JR SOUTHERN CROSS Z17
CIRCLE-D 832W DUCHESS 283Z
DR 7H MANNHEIM 014K
JSF 271 VIRGINIA ET 5M

(PE) EPDs BW: 4.6 WW: 47.9 YW: 78.9 MM: 16.2 TM: 40.1

Birthweight: 76 lbs.

20

Cow Calved February 21, 2006, Tattoo: GKF 12S

EPDS BW: 3.8 WW: 40.3 YW: 63.3 MM: 15.2 TM: 35.3

Sells bred on April 20, 2009 to STAR 26P Freedom 45T ET. Examined safe in calf.

A hard working daughter of Vaquero 25C that has what it takes to raise a calf. She is good uddered and very complete in her make up. You'll be impressed by the show prospect she is raising, sired by Stone, who was the 2006 Junior Bull Calf Champion at Agribition for us.



LOT 21A - RVP 614R WIKITA 74W

21A

RVP 614R WIKITA 74W

FEMALE

RVP 74W

February 15, 2009

PC02926673

CS BOOMER 29F
STAR-LAKE DANDY 614R
PC02868057 HAROLDSON'S CANDACE 122L 27N

RU 20X GALAXY 58G

MCCOY 58G ZENA 123S
PC02882726 MCCOY 52G ZENA 19M

REMITALL BOOMER 46B
CS MISS 1ST FLAG 21A
REMITALL ONLINE 122L
GOLD-N KR 2Z CANDACE 55C
REMITALL KEYNOTE 20X
RU 10A ELM 57E
MCCOY 994D BASIC 52G
MCCOY 909G ZENA 8J

EPDs BW: 3.8 WW: 50.9 YW: 94.6 MM: 24.2 TM: 49.6

Birthweight: 76 lbs.

21

Cow Calved March 13, 2006, Tattoo: ZTM 123S

EPDS BW: 3.8 WW: 38.3 YW: 80.5 MM: 24.9 TM: 44.0

Sells bred on April 24, 2009 to STAR 26P Freedom 45T ET. Examined safe in calf.

A very balanced set of EPDs go along with this good Galaxy daughter. She sells with a broody Dandy heifer calf. You'll love these Dandy daughters in production.

The Last Word!



LOT 22 – RVP 29F THE LAST WORD ET 13W

22

RVP 29F THE LAST WORD ET 13W

MALE

	RVP 13W	January 3, 2009	PC02928301
	REMITALL BOOMER 46B	REMITALL KEYNOTE 20X	REMITALL SALLY'S LASS ET 120X
CS BOOMER 29F	CS MISS 1ST FLAG 21A	GS CHECKERED FLAG	DS MS TOP PRIORITY 826
PC02749227		REMITALL KEYNOTE 20X	RU SARA 60X
	RU DUSTER 60D	TEE-JAY 707B FORTUNE 4F	JWH 86U GOLDIE 45A
JWH 60D DUSTY	JWH 45A MISS FORTUNE 707B 53J		
LADY 22M			
PC02828270			
(PE) EPDs	BW: 4.7	WW: 47.6	YW: 81.8
			MM: 19.9
			TM: 43.7
	Birthweight: 98 lbs.		

About the only way to inject Boomer 29F genetics into your herd now is to purchase one of his sons. This herd sire prospect is long sided with extra top and muscle shape. A maternal sister to 13W was a sale highlight two years ago, when she sold for \$30,000 to Larsons and Star Lake Cattle Ranch, while another sister sold to Remitall. Star Lake and Larsons were so impressed with the heifer that they put her in their donor program and purchased her dam in last year's sale. This is a very good bull from a very productive cow family.

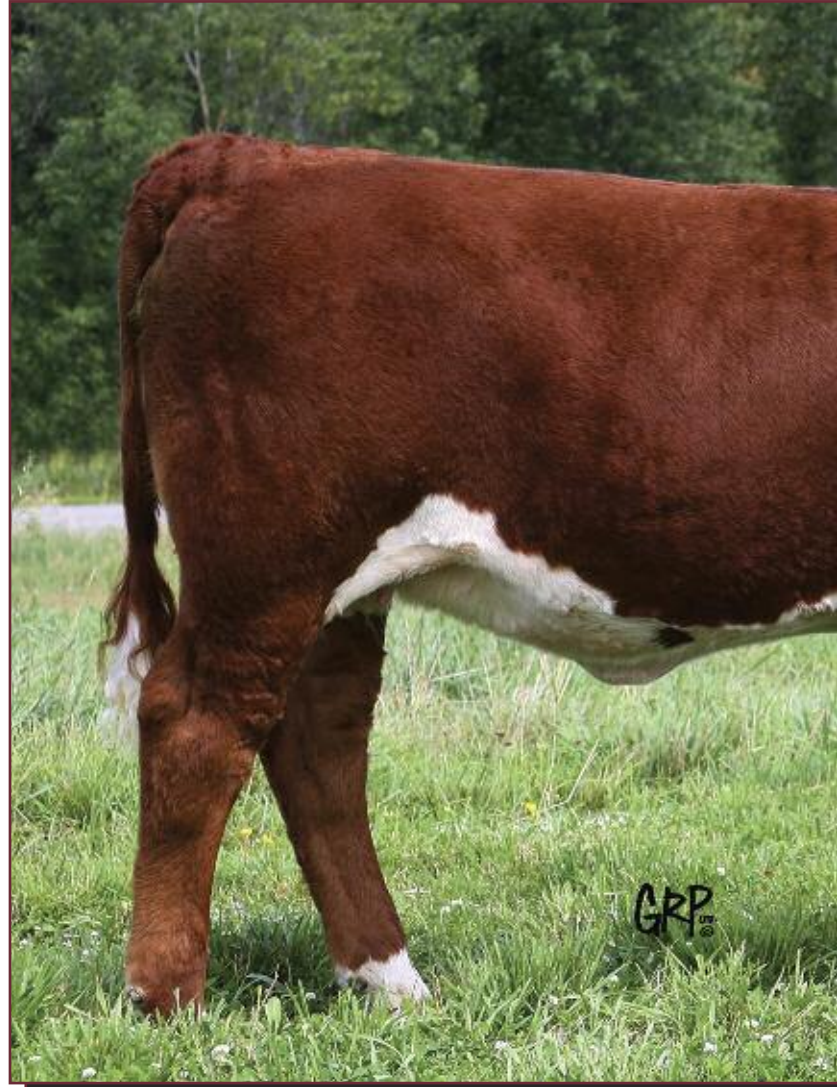


PED 122L STARLIGHT ET 43S - MATERNAL SISTER TO LOT 22



JWH 60D DUSTY LADY 22M - DAM OF LOT 22

Wedgewood...



LOT 23 - RVP STAR 80P WEDGEWOOD 10W

23

RVP STAR 80P WEDGEWOOD 10W

FEMALE

RVP 10W

January 3, 2009

AA PRF WIDELoad
 LAGRANd RELOAD 80P ET
 PC02867683 TSF MS KEYNOTE 729
 REMITALL ONLINE 122L
 PED 122L MISS REGAL 11R
 PC02867683 CBPH P183 ANGEL 174H
 (PE) EPDs BW: 5.6 WW: 54.7 YW: 95.1 MM: 17.5 TM: 44.9
 Birthweight: 85 lbs.

AA BOOMER 611
 PRF MS SCARLETT 919
 REMITALL KEYNOTE 20X
 BTF MS FORAGE 109W 9001
 REMITALL EMBRACER 8E
 REMITALL CATALINA 24H
 JR NICK THE BUTLER P183
 CBRS 67K TRUSTMAID 174D



PED 122L MISS REGAL 11R - DAM OF WEDGEWOOD



Over the years, this space in the catalogue has been reserved for extra special individuals. This heifer calf was an easy fit. Wedgewood 10W is extremely deep with extra top and shape. She is stout boned, sound in her structure, dark red and pigmented and is in a very eye-appealing package. She is genetically designed to be what she is. Her Online dam was National Reserve Senior Heifer Calf Champion at the 2005 Agribition. Her grandmother is a past champion female of the New York State Fair and is still in the herd at age 11.

TERMS TO BE ANNOUNCED.

Owned with Star Lake Cattle Ranch.



LAGRAND RELOAD 80P - SIRE OF WEDGEWOOD

'Top Show Prospects'



LOT 24 - RVP R125 MEGAN'S WISH 8W

24 **RVP R125 MEGAN'S WISH 8W** FEMALE

RVP 8W	January 2, 2009	PC02928289
KCF BENNETT 3008 M326		RRH MR FELT 3008
SHF RADAR M326 R125		KCF MISS 459 F284
PC02909876	SHF POSTIVE MISS 73C M15	RF POSTIVE PLUS 73C
		SHF INTERSTATE D03
	SPEARHEAD MAGNUM P28	FELTONS MAGNUM 434
STAR P28 MAGAN 64T		FELTONS KATE P70
PC02909730	STAR EFFIE LEA 117R ET	REMITALL ONLINE 122L
		REMITALL EFFIE 39K
EPDs	BW: 4.6 WW: 56.5 YW: 88.1	MM: 16.9 TM: 45.1
Birthweight: 67 lbs.		

One of the top cow prospects in the sale. Deep ribbed and moderate in her frame. The Radars are making top cows in production. Adding the maternal power of Remitall Effie, only adds to this top prospect.



LOT 25 - RVP STAR WITH BELLS ON ET 76W

25 **RVP STAR WITH BELLS ON ET 76W** FEMALE

RVP 76W	February 16, 2009	
MOHICAN EUREKA 67J		MW EUREKA 421E 1ET
STAR 67J ECLIPSE 135S		MOHICAN DEE M21E
PC02909480	GHC MISS CARLA 35J	WTK 75A CONTINENTAL 66F
		GL 127U KAREN 25Y
	CS BOOMER 29F	REMITALL BOOMER 46B
STAR KAIREE 14M		CS MISS 1ST FLAG 21A
PC02897367	STAR KKK MKS KLAIREE 112K	MSU STAR DR HEADMASTER
		K SEE K
(PE) EPDs	BW: 5.5 WW: 50.9 YW: 79.8	MM: 16.8 TM: 42.3
Birthweight: 66 lbs.		

A very thick and stout Eclipse daughter out of 14M, one of the top 29F daughters in the Hereford breed that has produced some of the top individuals in the beef industry. This Eclipse daughter has the look and genetic make up to be a competitive show heifer and a front-pasture cow.

Owned with Star Lake Cattle Ranch.



STAR KAIREE 14M - DAM OF LOT 25

Check out our website
for sale updates!
Remember sale
starts at 5:30 pm.

26

RVP 80P WHEEL OF FORTUNE 32W

FEMALE

RVP 32W January 16, 2009 PC02928291

AA PRF WIDELoad
LAGRAND RELOAD 80P ET
PC02892255 TSF MS KEYNOTE 729

CS BOOMER 29F
CIRCLE-D 29F PRICILLA 9P
PC02854601 CIRCLE-D 32D PRICILLA 20J

EPDs BW: 5.4 WW: 50.2 YW: 86.2 MM: 23.3 TM: 48.5

Birthweight: 83 lbs.

This Reload show prospect is out of a very good 29F daughter purchased from the Circle-D cow herd dispersal a few years ago. She has extra muscle shape and top, while still being feminine enough to be a competitive show heifer.

AA BOOMER 611
PRF MS SCARLETT 919
REMITALL KEYNOTE 20X
BTF MS FORAGE 109W 9001
REMITALL BOOMER 46B
CS MISS 1ST FLAG 21A
CIRCLE-D 832W MAVERICK 32D
CIRCLE-D 18U PRICILLA 081Y



LOT 26 - RVP 80P WHEEL OF FORTUNE 32W

27

RVP 139S WORK IT 81W

FEMALE

RVP 81W February 20, 2009 PC02928298

RU 20X BOULDER 57G
GHC VOLUME III ET 139S
PC02881594 WALPOLE PHILIS 13F

GHC CHUNK 113L
BLAIR-ATHOL CHUNKY SARA 2N
PC02828768 SHORTY-CROFT SARA 7L

(PE) EPDs BW: 3.9 WW: 51.9 YW: 84.3 MM: 15.5 TM: 41.5

Birthweight: 75 lbs.

This heifer calf is a great cow prospect. Her dam is a big volume, excellent uddered Chunk daughter. The Volume III daughters should prove to be highly maternal.

REMITALL KEYNOTE 20X
RU 10A DEW 57D
KLONDIKE 500Z FEDERATION 7C
BAR AT MISS SUSAN 19D
WTK 75A CONTINENTAL 66F
GHC MISS NANCY RENEE 48A
RU DUSTER 60D
REMITALL GAY SARA 112G



LOT 27 - RVP 139S WORK IT 81W



LOT 28 - MARJON 139T WREN 111W

28

MARJON 139T WREN 111W

FEMALE

PM 111W January 11, 2009

SB 122L GIT-R-DONE 19R ET
 STAR GOT-IT-HERE 139T ET
 PA42774903

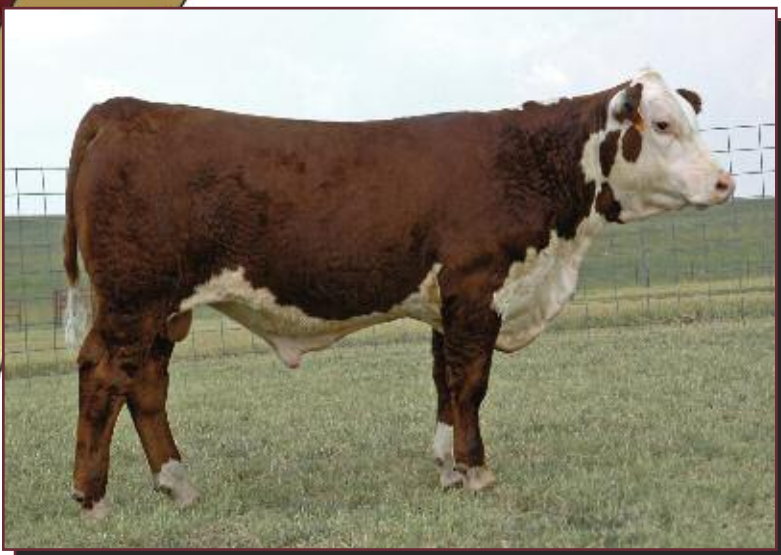
STAR BESTMAN 28M ET
 MARJON 28M SYBIL 111S
 PC02883183

(PE) EPDs BW: 4.3 WW: 47.9 YW: 80.0 MM: 15.9 TM: 39.6

REMITALL ONLINE 122L
 RU 20X ERIN 54E
 WTK 75A CONTINENTAL 66F
 GL 127U KAREN 25Y
 STAR SS THUNDER LT 62J
 JR K58 QUEEN D12
 CS BOOMER 29F
 SHAR-MEL SUSIE Q 213G

There were smiles all around at MARJON when Wren arrived on January 11, 2009. Being one of the first 139T heifer babies, we really started to appreciate our new STAR-Lake bull. The line breeding to 29F is attractive but power quickly comes to mind when you see this baby. Power without birth weight issues. Check out her numbers.

Owned by Mar-Jon Polled Herefords



LOT 29 -STAR GOT-IT-HERE 139T ETW - SIRE OF LOTS 28 & 29

29

MARJON 139T WILDA 113W

FEMALE

PM 113W January 13, 2009

SB 122L GIT-R-DONE 19R ET
 STAR GOT-IT-HERE 139T ET
 PA42774903

DOUBLE-U LONGITUDE ET 151L
 GLENLEES 151L BRITTANY 40P
 PC02852374

(PE) EPDs BW: 3.8 WW: 45.0 YW: 75.3 MM: 15.5 TM: 37.7

REMITALL ONLINE 122L
 RU 20X ERIN 54E
 WTK 75A CONTINENTAL 66F
 GL 127U KAREN 25Y
 FELTONS JUMBO 112
 DOUBLE-U MISS ANCHOR 1C 26E
 HAROLDSON'S FRANKIE 100A 33F
 RAWLY'S 81W APRIL 103A

Here comes a STAR Got It Here 139T heifer out of a true power cow. Born on January 13, Wilda is fancy with some serious substance and great EPDs'

Owned by Mar-Jon Polled Herefords



DOUBLE-U LTD EDITION ET 161L - SIRE OF LOT 30

30

MARJON 161L WINONA 107W

FEMALE

PM 107W January 7, 2009 PC02928314

DOUBLE-U LTD EDITION ET 161L
 PC02788503

STAR BESTMAN 28M ET
 MARJON RAIMEY 113R
 PC02872412

EPDs BW: 2.9 WW: 45.5 YW: 73.6 MM: 18.9 TM: 41.7

FELTONS SOUNDER 912
 FELTONS DOMINETTE G44
 DOUBLE-U ANCHOR 1C
 DOUBLE-U MISS CELEBRITY 20C
 STAR SS THUNDER LT 62J
 JR K58 QUEEN D12
 DYNAMITE ACRES HAT TRICK 169H
 DYNAMITE ACRES FANTASIA 109F

Another great Double-U Limited Edition ET 161L heifer. A granddaughter of the prolific Dynamite Acres Fantasir 318M. Her STAR Bestman 28M mom is a favorite here at MARJON. Great conformation and awesome numbers.

Owned by Mar-Jon Polled Herefords

Performance Yearlings



LOT 35 – RAF LADY 153U

35 RAF LADY 153U FEMALE
RAH 153U **January 14, 2009** **PC02914991**

REMITALL GOVERNOR 236G	REMITALL CASINO 12C
REMITALL LANDMARK ET 77L	REMITALL ZERMARVEL 111Z
PC02789141	MM RSM STOCKMASTER 512
REMITALL CATALINA 24H	REMITALL CATALINA 139C
ALLIANCE JUSTICE 19D 101J	NJW 1Y WRANGLER 19D
RAF JUST LADY 53R	SALUNGA 75A NIFTY 45E
PC02897347	PCP L1 DOMINO 57A
PCP 57A LADY 55D	PCP 17Z LADY 195B

EPDs BW: 3.3 WW: 38.4 YW: 60.7 MM: 16.7 TM: 35.9

Exposed to Square-D Northwestern 55T from March 19 to July 28, 2009. Preg checked safe for January calving.

Lady is moderate framed and out of an excellent young producing cow. Her pedigree combines some of the finest maternal genetics available.

Owned by Rolling Acres Farm



LOT 36 – RAF PATRICIA 165U

36 RAF PATRICIA 165U FEMALE
RAH 165U **January 8, 2009** **PC02914988**

REMITALL GOVERNOR 236G	REMITALL CASINO 12C
REMITALL LANDMARK ET 77L	REMITALL ZERMARVEL 111Z
PC02789141	MM RSM STOCKMASTER 512
REMITALL CATALINA 24H	REMITALL CATALINA 139C
JEFF'S WINDHOVER HAL 11H	MSU OPTIMUM Z03
RAF 11H PATRICIA 265M	JEFF'S WINDHOVER EMBER 64D
PC02818919	RAF 50A ELEMENT 54E
RAF 54E PATRICIA 65H	RAF 7A PATRICIA 751C

EPDs BW: 5.9 WW: 42.6 YW: 68.3 MM: 11.8 TM: 33.1

Exposed to Square-D Northwestern 55T from March 19 to July 28, 2009. Preg checked safe for January calving.

Patricia is a really well structured performance type female. She is out of a foundational cow family.

Owned by Rolling Acres Farm

Proven Matrons

37 PED 28M SONNET 68S FEMALE

RVP 68S **February 24, 2006** **PC02881818**

EAGLE-RIDGE BLASTER ET 4J	SQUARE-D EXPLOSION 909E
GOLDEN-OAK 4J MAXIUM 28M	KILMORLIE 75A BIRDY 746D
PC02816155	RU 20X BOULDER 57G
TA-BAR CHANTELLE 15K	TA-BAR CHANTELLE ET 15F
GOLDEN-OAK 3306 LAMPLIGHTER 5L	WS BOND 3306 1ET
GOLDEN-OAK 5L POETRY 39P	GOLDEN-OAK 80U HARRIET 12H
PC02845600	RU DUSTER 60D
GOLDEN-OAK 60D MERIT 6M	GOLDEN-OAK Y168 JASMINE 2J

EPDs BW: 4.4 WW: 43.4 YW: 73.2 MM: 14.9 TM: 36.6

Sells bred on May 4, 2009 to STAR 26P Freedom 45T ET. Examined safe in calf.
 One of the prettiest uddered females in the sale, this young cow is very nicely balanced and sound in her structure.
 Retaining her heifer calf RVP 88W born March 5, 2009; BW: 65 lbs. sired by Star-Lake Dandy 614R.



LOT 37 – PED 28M SONNET 68S

38 MARJON 28M RENATTA 310R FEMALE

PM 310R **March 10, 2005** **PC02873369**

STAR SS THUNDER LT 62J	CS BOOMER 29F
STAR BESTMAN 28M ET	SS TOOTS 136E
PC02841892	MARGFREDPARK DYNASTY K58
JR K58 QUEEN D12	JR P183 QUEEN B117
HAROLDSON'S RAIDER P183 ET 2Z	JR NICK THE BUTLER P183
MARJON 2Z NORA ET 115N	DING DING 21N 2S
PC02835602	REMITALL CRUSADER 153C
GOLD-BAR SIS 153C 121F	WOTTON BUTLER VINDI ULTRA 9U

EPDs BW: 4.0 WW: 42.6 YW: 71.6 MM: 15.8 TM: 37.1

Sells bred to STAR Got It Here 139T from March 21 to August 10, 2009.
 This Raider granddaughter displays many of the traits that made him a legend. Combining the current pedigree of STAR Bestman 28M with the legendary Gold-Bar program gives this female a strong foundation and modern numbers. We are retaining her 2009 bull calf at side.
 Owned by Mar-Jon Polled Herefords



LOT 38 – MARJON 28M RENATTA 310R

39 PED 77L LADY SYLVIA 39S FEMALE

RVP 39S **February 4, 2009** **PC02882157**

REMITALL GOVERNOR 236G	REMITALL CASINO 12C
REMITALL LANDMARK ET 77L	REMITALL ZERMARVEL 111Z
PC02789141	MM RSM STOCKMASTER 512
REMITALL CATALINA 24H	REMITALL CATALINA 139C
REMITALL KEYNOTE 20X	REMITALL TEAMSTER 9T
PED 20X LADY 38K	REMITALL PATRICIA 99P
PC02767459	JR NICK THE BUTLER P183
GOLD-BAR LADY 183P 509D	PGL HIGH FASHION 3A

EPDs BW: 4.5 WW: 44.3 YW: 64.7 MM: 13.1 TM: 35.3

Sells bred on March 28, 2009 to STAR 26P Freedom 45T ET. Examined safe in calf.
 This young Landmark daughter is long sided and pretty fronted, with a very nice udder. Landmark is a full brother to Remitall Olympian. Her steer calf is being retained.



LOT 39 – PED 77L LADY SYLVIA 39S



LOT 40 – HINTERLAND BABYDOLL 36S

40 HINTERLAND BABYDOLL 36S FEMALE
RCY 36S January 11, 2006 **PC02878553**

CIRCLE-D WRANGLER 832W	BAR H L1 CHANCE 55S
NJW 1Y WRANGLER 19D	CIRCLE D 193 SILHOUETTE 335S
PC02693158	BT JR QUESTER 604M
NJW FROSTY 1Y	NJW P183 00E NICKETTE 1W
WIRANYA BATAVIA	VENA PARK SHARKA
TLELL S5 AUSSIE 13P	WIRANYA DIANA L99
PC02847911	REMITALL BOOMER 46B
SADDLE-VALLEY 46B WILLA 146J	KLONDIKE JEAN 102B

EPDs BW: 4.3 WW: 45.3 YW: 84.0 MM: 17.0 TM: 39.7

Sells bred on June 2, 2009 to RVP STAR Can-Am ET 57U. Examined safe in calf.
 Here is a top 19D daughter that is doing a really good job of raising her calf. She is a long sided, big volume and easy fleshing cow. Her steer calf is being retained.



LOT 41 – RVP 122L ROCK'N ET 58R

41 RVP 122L ROCK'N ET 58R FEMALE
RVP 58R February 16, 2005 **PC02874120**

REMITALL EMBRACER 8E	REMITALL ACME 10A
REMITALL ONLINE 122L	PLAIN LAKE BELLE 20X 117P 5B
PC02789138	MM RSM STOCKMASTER 512
REMITALL CATALINA 24H	REMITALL CATALINA 139C
MEGA MARK 720Y	TRUSTMARK
ONONDAGA MM USHIE 28F	JR 680K ALEXIS U149
PC02648072	TRM CCF PRIDE
ONONDAGA PR URSEL 194D	ONONDAGA 535 URSULA 46A

EPDs BW: 5.8 WW: 56.0 YW: 95.7 MM: 11.2 TM: 39.2

Sells bred on May 24, 2009 to STAR 26P Freedom 45T ET. Examined safe in calf.
 This is a top Online daughter that has extra rib shape and always brings in a big fat calf. These Online daughters have had a major impact on the breed. Her steer calf is being retained.



STAR 26P FREEDOM 45T ET - SERVICE SIRE FOR LOT 42

42 JC SANDY 42S FEMALE
COY 42S March 16, 2006 **PC02879558**

JSF 37 271 DEVO 23C	RLOA R271 DYNASTY ET 37U
ABBY-HILL GOLDIE 23C 126L	JSF 183 VICTORIA 7A
PC02793549	GHC MODEL MAN 21N
ABBY-HILL GOLDEN MODEL 21N 27J	ABBY-HILL GOLDIELOCKS 37U 215F
JC ROCKET THUNDER 3H	TIL-TOBA ROCKET 4W 8A
JC COLBI 30M	COSMOS LOCKER 57B
PC02823210	HAROLDSON'S DIAMOND 2Z 15E
HAROLDSON'S COLBI 15E 60H	HAROLDSON'S VICTRESS 119A 9D

EPDs BW: 1.9 WW: 42.1 YW: 67.7 MM: 14.5 TM: 35.5

Sells bred on June 16, 2009 to STAR 26P Freedom 45T ET. Examined safe in calf.
 This is a nice young cow that shows us a little extra rib shape in a moderate frame. Her Dandy heifer calf, being retained in the herd, shows us lots of promise and we expect she'll develop into a nice cow.
 Retaining her heifer calf RVP 109W born March 24, 2009; BW: 82 lbs. sired by Star-Lake Dandy 614R.

43

Three #1 Exportable Embryos

CS Boomer 29F x RVP 10T

REMITALL BOOMER 46B
CS BOOMER 29F
PC02749227 CS MISS 1ST FLAG 21A

REMITALL KEYNOTE 20X
REMITALL SALLY'S LASS ET 120X
GS CHECKERED FLAG
DS MS TOP PRIORITY 826

HF 4L BEYOND 36N
RVP 36N TOUCH OF GOLD ET 10T
PC02897731

FCC 60G MADDUX 4L
MISS 87D FORTUNE 707B 67J
REMITALL ONLINE 122L
GOLD-N KR 2Z CANDACE 55C

(PE) EPDs BW: 5.1 WW: 57.1 YW: 96.4 MM: 24.7 TM: 53.3

An exciting mating from the current Reserve Canadian National Champion Female and breed icon, 29F.

Owned with Hinterland Polled Herefords.



RVP 36N TOUCH OF GOLD ET 10T

44A

Three #1 Exportable Embryos

Remital Online 122L x RVL 65L

REMITALL EMBRACER 8E
REMITALL ONLINE 122L
PC02789138 REMITALL CATALINA 24H

REMITALL ACME 10A
PLAIN LAKE BELLE 20X 117P 5B
MM RSM STOCKMASTER 512
REMITALL CATALINA 139C

PED 46B HERCULES 20H
PED WHAT A GAL 65L
PC02793936

REMITALL BOOMER 46B
ELM-LODGE 25Z DESIRE 24D
MSU OPTIMUM Z03
PED 97A MISS VICTORIAN 17D

(PE) EPDs BW: 4.6 WW: 54.6 YW: 91.8 MM: 16.2 TM: 43.4



PED WHAT A GAL 65L

44B

Three #1 Exportable Embryos

STAR-Lake Dandy 614R x RVP 65L

CS BOOMER 29F
STAR-LAKE DANDY 614R
PC02868057 HAROLDSON'S CANDACE 122L 27N

REMITALL BOOMER 46B
CS MISS 1ST FLAG 21A
REMITALL ONLINE 122L
GOLD-N KR 2Z CANDACE 55C

PED 46B HERCULES 20H
PED WHAT A GAL 65L
PC02793936 PED RIVERVALLEY Z03 STELLA 23F

REMITALL BOOMER 46B
ELM-LODGE 25Z DESIRE 24D
MSU OPTIMUM Z03
PED 97A MISS VICTORIAN 17D

(PE) EPDs BW: 3.9 WW: 53.0 YW: 89.0 MM: 17.1 TM: 43.5

The dam of these embryos is a deep sided, long bodied, Boomer 46B granddaughter. She had a successful show career which includes second place at the Denver National Hereford Show. She is the dam of the Champion Red Coat Classic Female at Agribition, last year.



HARVIE MS NYLON 29F ET 174R

45A
45B

Two #1 Exportable Embryos

One #1 Domestic Embryo

STAR Bright Future 533P ET x CVIH 174R

REMITALL ONLINE 122L
STAR BRIGHT FUTURE 533P ET
PC02897365 RB L1 DOMINETTE 8116

REMITALL EMBRACER 8E
REMITALL CATALINA 24H
RB L1 DOMINO 4067
RB L1 BRIGHTNES 0058

CS BOOMER 29F
HARVIE MS NYLON 29F ET 174R
PC02876749 HARVIE MISS NYLON 1Y

REMITALL BOOMER 46B
CS MISS 1ST FLAG 21A
DURALTA 359S NYLON 16W
CHSF 4R MISS CHOICE 11U

(PE) EPDs BW: 4.1 WW: 50.3 YW: 83.2 MM: 22.9 TM: 48.1

The dam of these embryos is an ultra feminine, super uddered female from which we expect great things. The sire is Bright Future whose progeny have been dominating both the show and sale rings.

Owned with Harvie Ranch and Taboo Polled Herefords.



GH PEARLINE ET 20N

46

Three #1 Exportable Embryos

GHC Star Moose 59M x GAH 20N

WTK 75A CONTINENTAL 66F
GHC STAR MOOSE 59M
PC02802059 WALPOLE PHILIS 13F

WTK 55Y BOND 75A
WTK 119A CARLOTTA 66C
KLONDIKE 500Z FEDERATION 7C
BAR AT MISS SUSAN 19D

REMITALL ONLINE 122L
GH PEARLINE ET 20N
PC02831443 JV PEARL 809

REMITALL EMBRACER 8E
REMITALL CATALINA 24H
HOME BUILDER DELUX
JV PEARL 44T

(PE) EPDs BW: 5.7 WW: 65.9 YW: 101.7 MM: 17.4 TM: 50.3

The dam of these embryos is a daughter of breed matriarch, "Pearl." The Pearl cow family has produced some of the most noted bulls and females in the breed. The Moose factor will add extra performance.

Reference Sires



RVP STAR 533P CAN-AM ET 57U



SHF RADAR M326 R125



STAR 12G PALLIADIN 115N



HAROLDSON'S WLL ANCHOR 4T

A RVP STAR 533P CAN-AM ET 57U MALE

RVP 57U	February 5, 2008	PC02918528
REMITALL ONLINE 122L		REMITALL EMBRACER 8E
STAR BRIGHT FUTURE 533P ET		REMITALL CATALINA 24H
PC02897365 RB L1 DOMINETTE 8116		RB L1 DOMINO 4067
		RB L1 BRIGHTNES 0058
		REMITALL BOOMER 46B
CS BOOMER 29F		CS MISS 1ST FLAG 21A
STAR BONNIE BETH 54N		H 8E EMBRACER 8006
PA42357729 HCC BONITA 8L		BIGT 75A BONITA C156
EPDs BW: 4.1 WW: 58.7 YW: 92.1 MM: 23.3 TM: 52.7		

Owned by: River Valley Polled Herefords, Star Lake Cattle Ranch, Ridgeview Farm, Boot Hill Ranch, Beck-Powell, C3 Cattle Co., Sam Littau, Old Beech Farm, Rocking M Farm, Richardson Ranch, OJJ Cattle Ranch, Hinterland, Albert Moeller and Tim Hendricks

B SHF RADAR M326 R125 MALE

R125	March 6, 2005	PC02909876
RRH MR FELT 3008		FELTONS 517
KCF BENNETT 3008 M326		RRH MS VICT 6191
PA42361822 KCF MISS 459 F284		FELTONS 459
		KCF MISS X4 B156
		BAR JZ TRADITION 434V
RF POSTIVE PLUS 73C		RF VICTRA F243 37Y
SHF POSTIVE MISS 73C M15		SHF INTERSTATE 20X D03
PA42293267 SHF INTERSTATE D03		SHF DUTCHESS 653T C90
EPDs BW: 4.7 WW: 59.8 YW: 87.6 MM: 18.5 TM: 48.4		

Owned by: Star Lake Cattle Ranch, Red Hills Polled Herefords, Tyler Schultz and Radar Group

C STAR 12G PALLIADIN 115N MALE

STAR 115N	March 11, 2003	PC02847633
REMITALL KEYNOTE 20X		REMITALL TEAMSTER 9T
HAROLDSON'S PRINGLE 20X 12G		REMITALL PATRICIA 99P
PC02683741 THE-CLIFFS P183 JOY 5C		JR NICK THE BUTLER P183
		THE-CLIFFS 18L JOY 35W
		WTK 55Y BOND 75A
WTK 75A CONTINENTAL 66F		WTK 119A CARLOTTA 66C
GHC MISS CARLA 35J		KILMORLIE 452M REDEYE 127U
PC02735931 GL 127U KAREN 25Y		KLONDIKE KAREN 895U
EPDs BW: 6.9 WW: 60.3 YW: 93.4 MM: 15.2 TM: 45.3		

Owned by: Star Lake Cattle Ranch River and Valley Polled Herefords

D HAROLDSON'S WLL ANCHOR 4T MALE

AFSY 4T	January 20, 2007	PC02901004
REMITALL CASINO 12C		REMITALL ADMIRAL 48A
REMITALL GOVERNOR 236G		REMITALL SALLY'S LASS ET 120X
PC02676840 REMITALL ZERMARVEL 111Z		REMITALL KEYNOTE 20X
		REMITALL URSULA 16U
		MM RSM STOCKMASTER 51Z
REMITALL HOLLYWOOD 37H		REMITALL SHARON ESTA 84E
HAROLDSON'S 37H MIRA ET 62K		HAROLDSON'S RAIDER P183 ET 2Z
PC02777365 HAROLDSON'S CU DESTINY 2Z 19G		SQUARE-D SUSIE 537C
EPDs BW: 5.8 WW: 49.1 YW: 84.3 MM: 19.9 TM: 44.5		

Owned by: Haroldson's Polled Herefords, River Valley Polled Herefords, NJB Limited, Scott Alta Farms, Heritage Cattle Co, ABH Farm, , Rock'n H Herefords, Wooden Shoe Farms, Nookan Poll Herefords, O'Shea Farms, Taboo Polled Herefords, Beck-Powell Polled Herefords, Rawcliffe Grange Stock Farm, NBG Polled Herefords, W G Oulton & Sons, Star Lake Cattle Ranch, Moeskaer Polled Herefords and Deshazer Cattle Co.

E STAR 2013 BATTLE CRY 455 MALE

STAR 455	January 13, 2006	PC02904113
C-S PURE GOLD 98170		C GOLD RUSH 1ET
HB STAR BATTLE GROUND 2013		C MS DOM 93218 1ET
PC02887547	MSU MISS WRANGLER 61J	NJW TY WRANGLER 19D
		MSU VICTORIA 9F
	REMITALL ONLINE 122L	REMITALL EMBRACER 8E
STAR ONLINIA DOMINETTE 507P ET		REMITALL CATALINA 24H
PA42483826	RB LI DOMINETTE 4059	CL 1 DOMINO 386
		RB LI DOMINETTE 1038
EPDs	BW: 3.1 WW: 44.9 YW: 79.0	MM: 17.7 TM: 40.1

Owned by: Star Lake Cattle Ranch and River Valley Polled Herefords



STAR 2013 BATTLE CRY 455

F STAR RVPH REPLAY 327T ET MALE

STAR 327T	March 11, 2008	PC02909729
AA PRF WIDELOAD		AA BOOMER 611
LAGRAND RELOAD 80P ET		PRF MS SCARLETT 919
PC02892255	TSF MS KEYNOTE 729	REMITALL KEYNOTE 20X
		BTF MS FORAGE 109W 9001
	CS BOOMER 29F	REMITALL BOOMER 46B
STAR KAIREE 14M		CS MISS 1ST FLAG 21A
PC02897367	STAR KKK MKS KLAIREE 112K	MSU STAR DR HEADMASTER
		K SEE K
EPDs	BW: 4.2 WW: 43.2 YW: 75.6	MM: 18.3 TM: 39.9

Owned by: Star Lake Cattle Ranch, River Valley Polled Herefords and Rolling Acres Farm



STAR RVPH REPLAY 327T ET

G STAR-LAKE DANDY 614R MALE

STAR 614R	February 12, 2005	PC02868057
REMITALL BOOMER 46B		REMITALL KEYNOTE 20X
CS BOOMER 29F		REMITALL SALLY'S LASS ET 120X
PC02749227	CS MISS 1ST FLAG 21A	GS CHECKERED FLAG
		DS MS TOP PRIORITY 826
	REMITALL ONLINE 122L	REMITALL EMBRACER 8E
HAROLDSON'S CANDACE 122L 27N		REMITALL CATALINA 24H
PC02836714	GOLD-N KR 2Z CANDACE 55C	HAROLDSON'S RAIDER P183 ET 2Z
		GOLD-N 1S MISS RYDER 1X
EPDs	BW: 3.7 WW: 63.4 YW: 108.7	MM: 23.5 TM: 55.2

Owned by: Star Lake Cattle Ranch, River Valley Polled Herefords and Putney Heath Farm



STAR-LAKE DANDY 614R

H STAR 26P FREEDOM 45T ET MALE

STAR 45T	January 10, 2007	PC02910241
STAR AMERICA BNMHPH SS MKS 68M		RST ROF STAR LINEDRIVE
STAR TRF INDEPENDENCE 26P ET		STAR MKS WESTERN STAR 55
PC02897366	STAR TRF MALLORY 47J	CS BOOMER 29F
		SIS
	H 8E EMBRACER 8006	REMITALL EMBRACER 8E
STAR RICKI 162M		H MISS APPROVAL 9082
PA42259781	STAR ROCKIN ERICA 38F	GK EXCELLO 116B
		RCR MARKETTE 95D 3ET
EPDs	BW: 4.0 WW: 48.6 YW: 78.7	MM: 18.3 TM: 42.6

Owned by: Star Lake Cattle Ranch and River Valley Polled Herefords



STAR 26P FREEDOM 45T ET



LAGRAND RELOAD 80P ET

LAGRAND RELOAD 80P ET

MALE

80P **March 6, 2004** **PC02892255**

AA BOOMER 611
 AA PRF WIDELOAD
 PA42325186 PRF MS SCARLETT 919

REMITALL KEYNOTE 20X
 TSF MS KEYNOTE 729
 PA24025002 BTF MS FORAGE 109W 9001

EPDs BW: 6.0 WW: 52.3 YW: 93.8 MM: 18.3 TM: 44.5

Owned by: Star Lake Cattle Ranch, Heritage Cattle Co., LaGrand Hereford Ranch, Perks Ranch, The Reload Group



STAR BRIGHT FUTURE 533P ET

STAR BRIGHT FUTURE 533P ET

MALE

33P **January 29, 2007** **PC02897365**

REMITALL EMBRACER 8E
 REMITALL ONLINE 122L
 PC02789138 REMITALL CATALINA 24H

REMITALL ACME 10A
 PLAIN LAKE BELLE 20X 117P 5B
 MM RSM STOCKMASTER 512
 REMITALL CATALINA 139C

CL 1 DOMINO 386
 RB L1 DOMINETTE 1020
 RB VOLTAGE 8021
 RB L1 DOMINETTE 6033

RB L1 DOMINO 4067
 RB L1 DOMINETTE 8116
 A41050714 RB L1 BRIGHTNES 0058

EPDs BW: 5.0 WW: 64.9 YW: 99.9 MM: 22.7 TM: 55.2

Owned by: Star Lake Cattle Ranch, CMR/Grandview, Selca Farms



STAR 5L BOOSTER 187R

STAR 5L BOOSTER 187R

MALE

STAR 187R **February 10, 2005** **C02891929**

CS BOOMER 29F
 STAR OBF BOGART 5L
 PC02802282 NJW 1Y LARIAT 41E

HH ADVANCE 767G 1ET
 RCH MISS ADVANCE 1021
 PA42195516 RB L1 DOMINETTE 4059

REMITALL BOOMER 46B
 CS MISS 1ST FLAG 21A
 CIRCLE-D WRANGLER 832W
 NJW FROSTY 1Y

CL 1 DOMINO 500E
 HH MISS ADVANCE 251B
 CL 1 DOMINO 386
 RB L1 DOMINETTE 1038

EPDs BW: 2.6 WW: 60.0 YW: 92.1 MM: 24.2 TM: 54.2

Owned by: Star Lake Cattle Ranch, River Valley Polled Herefords and Steve Spelts



CS BOOMER 29F

CS BOOMER 29F

MALE

29F **May 5, 1996** **PC02749227**

REMITALL KEYNOTE 20X
 REMITALL BOOMER 46B
 PC02505252 REMITALL SALLY'S LASS ET 120X

REMITALL TEAMSTER 9T
 REMITALL PATRICIA 99P
 REMITALL TOP HAT 206T
 HB SALLY TANGENT 50S

IHRY GK RACE
 GS GILDING 115 145
 AA R TOP PRIORITY 398
 WSF MS FRAMEWRK 054N

GS CHECKERED FLAG
 CS MISS 1ST FLAG 21A
 PA23559479 DS MS TOP PRIORITY 826

EPDs BW: 4.0 WW: 50.9 YW: 89.1 MM: 27.3 TM: 52.8

Owned by: Star Lake Cattle Ranch, Stockdale Hereford Farm, Tennessee River Music, NJB Ltd.

New

BUYER APPRECIATION DRAW

As a special thank you to all those who attend sale day, we encourage you to register early in the sales ring for your chance to win.

All draws will take place in the sales ring just prior to the sale.

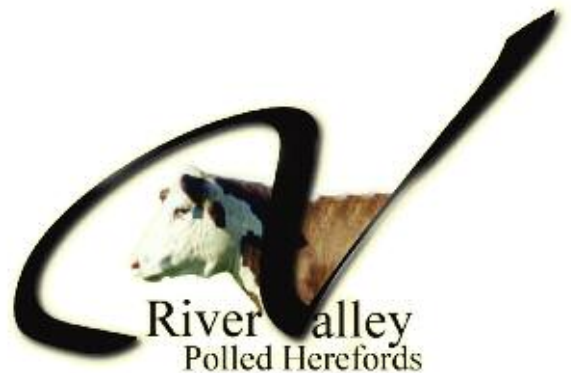
Juniors

- register before 3:30 pm for a \$500.00 sale credit
- register before 4:30 pm for a \$250.00 sale credit

Adults

- register before 3:30 pm to win an Ontario Hereford jacket
- register before 4:30 pm to win 2 straws of any River Valley owned bull

*must be in attendance in order to win



The “Genetic Design”

Junior Incentive Program

River Valley offers incentives to all junior members who purchase and exhibit River Valley animals.
(Does not apply to animals purchased from our consignors)

The Canadian or American National Junior Shows

\$1000.00 – Grand Champion
\$500.00 – Reserve Grand Champion
\$250.00 – Divisional Winner
\$100.00 – Class Winner

Canadian Provincial Junior Shows

\$500.00 – Grand Champion
\$250.00 – Reserve Grand Champion
\$100.00 – Divisional Winner

National 4-H Show at the Royal Agricultural Winter Fair

\$500.00 – Grand Champion
\$250.00 – Reserve Grand Champion
\$100.00 – Divisional Winner

Rules:

The purchase must be transferred to the Junior’s name.
Claims must be made in writing, complete with a picture of the winning.

Juniors from Western Canada and the United States purchasing for Bonanza 2010 in Quebec:

We will maintain your purchases for Bonanza 2010 at no charge.

River Valley will make any necessary trucking arrangements to Bonanza. River Valley will do all export testing for US purchases.



RVP Star 533P Can-Am 57U
 Junior Bull Calf Champion
 Owned by River Valley, Star Lake,
 Ridgeview and Can-Am Breeders



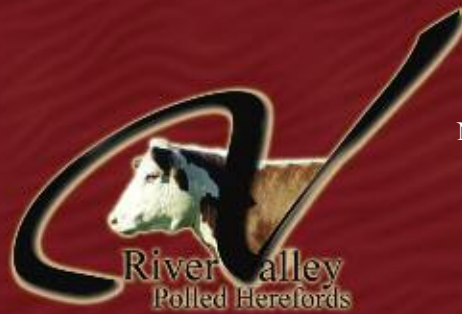
RVP 36N Touch of Gold 10T
 National Reserve Grand Champion
 Owned with Anita Doktor



RVP 20R Ursula 95U
 National Reserve Junior Heifer Calf Champion
 Owned by Mitchell Krause



RVP 80P What A Unit 17U
 CWA Red Coat Classic
 Champion Female



RVP Star 122L Ultra ET 74U
 National Junior Heifer
 Calf Champion



RVP Star 80P Unequaled ET 2U
 Grand Champion Female
 Ontario Junior Hereford Show - Beef-A- Rama 09
 Owned by Caylynne Brown